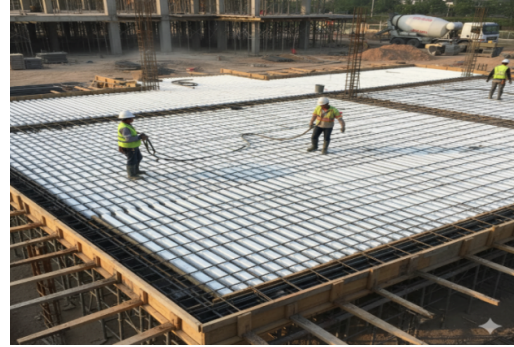


# LAMINATED FLUTE BOARD FOR SLAB CASTING

It protects your precious aluminium Formwork/plywood sheets, no water leakage to protect slab from cracks and get even surface finish.

## Product Overview: Laminated Flute Board For Slab Casting

Our Laminated Flute Board are a modern, highly effective alternative to traditional release agents and liners for concrete slab casting. Designed to be placed directly onto the plywood or steel formwork, they act as an impervious barrier, ensuring a smooth, clean concrete finish while protecting and extending the lifespan of your formwork. They offer a cost-effective and environmentally friendly solution for high-quality slab construction.



Feature	Benefit
<b>Material</b>	<b>Polypropylene (PP):</b> Lightweight, durable, and chemically inert.
<b>Structure</b>	<b>Twin-wall Corrugated (Fluted):</b> High stiffness-to-weight ratio and excellent impact resistance.
<b>Application</b>	<b>Separator/Release Layer</b> between wet concrete and formwork (plywood, steel).
<b>Reusability</b>	<b>Multiple Uses Possible:</b> Easy to clean and handle, significantly reducing material waste.
<b>Finish</b>	<b>Superior Concrete Surface:</b> Prevents concrete from sticking, minimizing surface imperfections and clean-up.



### FLOOR GUARD

B-16B, Basement Shree Krishna Centre, Nr. Passport Office, Mithakhali Cross Road, Navrangpura, Ahmedabad, Gujarat – 380009. Contact Us: +91 7359989777, +91 7016431978.

Email ID: [sales.floorguard@gmail.com](mailto:sales.floorguard@gmail.com); Website: [www.floorguard.in](http://www.floorguard.in)

## Key Advantages & Applications

### Core Benefits for Construction

- **Formwork Protection & Longevity:** Prevents concrete and moisture penetration, significantly reducing the wear and tear on expensive plywood formwork, extending its service life.
- **Superior Concrete Finish:** Creates a smooth, consistent surface, reducing the need for post-casting grinding or finishing work.
- **Easy Stripping (Release):** The non-stick PP surface ensures the concrete releases cleanly from the formwork with minimal effort.
- **Lightweight & Easy Handling:** Simple to cut, transport, and install on-site, boosting labour efficiency.
- **Water & Chemical Resistance:** Impervious to water and resistant to common construction chemicals.

### Ideal Applications

- **Residential & Commercial Slab Construction:** Perfect for all types of reinforced concrete slabs.
- **Pre-cast Concrete Elements:** Ensures clean separation and a perfect finish for modular pre-cast slabs.
- **Formwork Lining:** Used as a protective and release liner over plywood, timber, or metal forms.



## Product Specifications

We offer a range of standard sizes and customizable options to meet diverse project requirements.

Specification	Standard Range	Description
<b>Material</b>	100% Virgin PP	Durable, non-toxic, and recyclable.
<b>Thickness</b>	2 mm to 5 mm	Higher thickness offers greater durability and reusability.
<b>GSM (Weight)</b>	250 GSM to 1000 GSM	Weight per square meter; higher GSM indicates a denser, stronger sheet.
<b>Colour</b>	Standard (White/Grey/Blue)	Colours can aid in identification and material segregation on site.
<b>Standard Size</b>	1220 mm x 1.828 mm (4 feet x 6 feet)	Matches standard formwork/plywood dimensions; custom sizes available upon request.
<b>Treatment</b>	UV Stabilized (Optional)	Recommended for long-term storage or exposed use.

### FLOOR GUARD

B-16B, Basement Shree Krishna Centre, Nr. Passport Office, Mithakhali Cross Road, Navrangpura, Ahmedabad, Gujarat – 380009. Contact Us: +91 7359989777, +91 7016431978.

Email ID: [sales.floorguard@gmail.com](mailto:sales.floorguard@gmail.com); Website: [www.floorguard.in](http://www.floorguard.in)